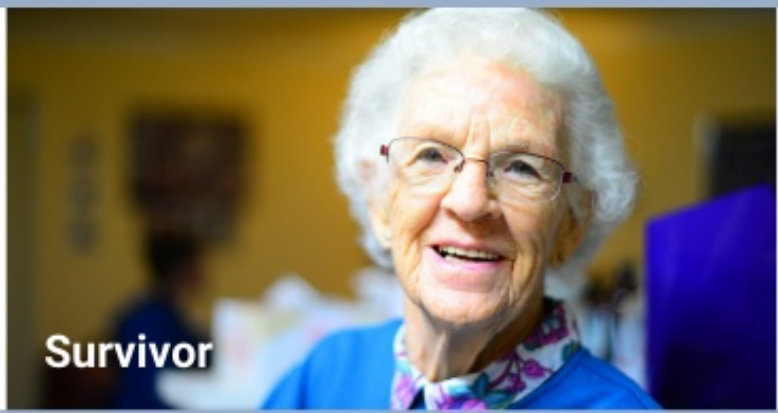




Ending Homelessness for Women



January 2020

A new year, a new decade. A renewed resolve to end homelessness for women!

Greetings!

As we begin 2020, we renew our commitment to support women in need of shelter and housing.

The year has begun on a challenging note as we face a winter storm brutal to those experiencing homelessness. In this difficult time, The Sophia Way **extended its hours to close the gap** when the women would be outside braving the elements. Our amazing staff prepared emergency supplies, stocked the freezer with meals, and geared up to spend days and nights at the shelters to ensure women were safe and healthy. Last year, in February, a woman tragically died, searching for the Emergency Shelter. The Sophia Way is doing everything possible to ensure this will not happen again.



We have much to look forward to this year, especially the opening of our **new shelter in Kirkland** when we will be able to offer shelter and supportive serves every hour and every day of the year.

We cannot do our work without our community and you give us the strength and the inspiration to serve women who most need our help. You give them the support to find a new beginning. Thank you for caring.

Happy New Year and good wishes to you and your family,

Alisa Chatinsky
Interim Executive Director

P.S.: The situation we are facing this week, is a reminder that we need to be open for

extended hours even when there is no snow. The challenges that women face from the elements, every day, makes it imperative that we extend our shelter hours for all times, not just when there is a winter storm. If you would like to support The Sophia Way's efforts to extend shelter hours, please donate now.

It costs \$700, every day, to keep our shelters open for five more hours. Your dollars will contribute to keeping our women warm, dry, and safe.

[DONATE NOW](#)

2019: The Year in Pictures

We look back at the year with gratitude for --

Financial gifts from individuals, corporations, and foundations that gave generous dollars to support our women

Meal donors who shared delicious, nutritious meals

Volunteers who gave their time and talent, to help improve the lives of the women we serve

Clothes, toiletries, make up, shoes, etc. donated by our community to keep Sophia's Closet filled with items most of us take for granted

Donor Highlights



[View photo gallery](#)

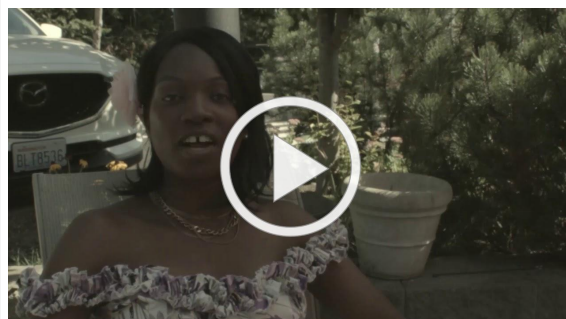
Volunteers Spotlight



[View photo gallery](#)

2019: Sophia Voices

Two of our clients show their gratitude for your support!



"I've conquered being homeless!"

"I felt the love at The Sophia Way"

Holidays Made Brighter with the Community's Help

"It makes me feel good to know there are people who really care about us."

Every year, the holidays are a joyful and rewarding time at The Sophia Way. The *Holiday Gifting Initiative* brings together the community with just one goal – to make the holidays happy for women we serve.



[Read More](#)

Thank you for supporting our mission to end homelessness for women in our community.

[Give](#)

[Nourish](#)

[Volunteer](#)

Our Office

The Sophia Way
11061 NE 2nd Street,
Suite 223
Bellevue, WA 98004
Ph: 425-463-6285
Email: info@sophiaway.org

Day Center

Sophia's Place
3032 Bellevue Way NE
Bellevue, WA 98004
Ph: 425-896-7385
8 AM to 3 PM
Bus route: 249

Emergency Shelter (Until May 2020)

Temple B'nai Torah
15727 NE 4th Street,
Bellevue, WA 98008
Ph: 425.463.6254
8:30 PM to 7:30 AM
Bus routes: 226, 245, B Line

FOLLOW. LIKE. TAG. SHARE.

