

Permanent Supportive
Housing:

The Solution to Chronic
Homelessness

Plymouth
Housing



Our Mission

Plymouth Housing works to eliminate homelessness and address its causes by preserving, developing and operating safe, quality, supportive housing and by providing homeless adults with opportunities to stabilize and improve their lives.



King County Chronic Homelessness in January 2020



3,355

Of these single adults

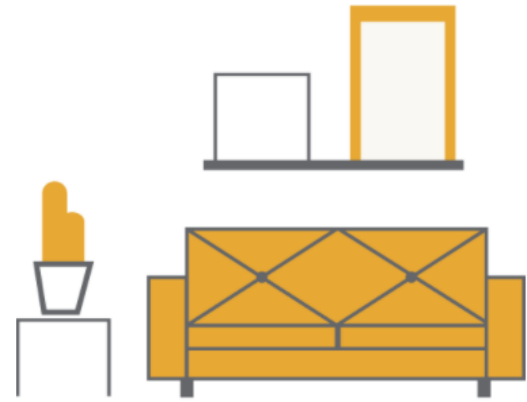
- **36%** female, **60%** male, **4%** transgender or other
- **18%** LGBTQIA

What medical conditions do they live with

- **73%** psychiatric/emotional condition
- **65%** PTSD
- **64%** substance use conditions
- **45%** chronic health problems
- **41%** physical disability
- and more

Plymouth's Housing First Principles

Every person has the right to a home, and every person matters exactly as they are.



We Believe

That everybody is ready for housing,
and we make moving into our
apartments as easy as possible for our



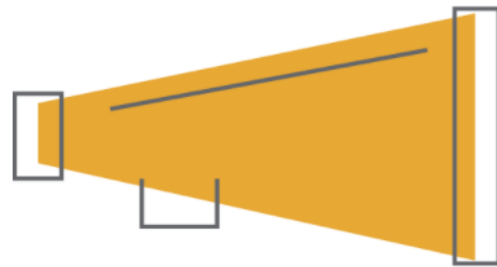
We Empower

Our residents by offering them the
choice to engage in services and we're
here when they need us.



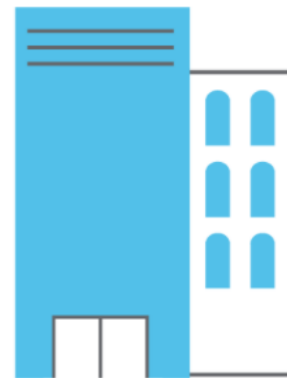
We Provide

Opportunities for growth that start
with each resident's individual needs.



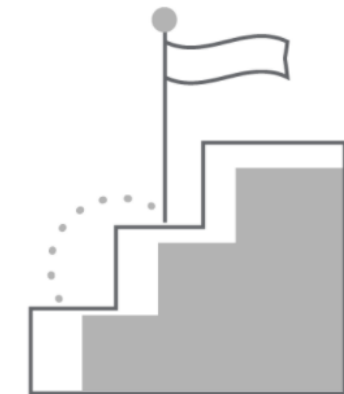
We Advocate

For our residents' rights and voices.



We Build

Diverse, welcoming communities that
help our residents avoid a return to
homelessness.



We Celebrate

Every small success because we know
that change happens incrementally.

Plymouth's Harm Reduction Principals

Meet people where they are with a home and personalized support.



We are practical and realistic

Harm reduction is based on tools, research, and education to minimize risk and maximize safety and accepts the reality that substance use is part of our world.



We practice equity

We all deserve care, consideration, empathy, and the tools to be empowered in our decision-making processes.



We offer a continuum of care

Harm reduction applies to every person, in every scenario, from the simple to the complex while acknowledging that some activities are inherently safer than others.



We believe people know themselves best

People are experts on their own lives; they make changes if and when they are ready.



We leave judgment at the door

No issue is one-sided. Non-coercive, collaborative care is always the goal.



We ask "why?"

Strive to learn why and how a person is making decisions, but do not minimize or ignore the harms of substance use.

Who do we serve: A snapshot

We serve single adults with acute needs. Of the roughly 1,100 people we served in 2020:

- 97% were disabled
- 58% had mental health conditions
- 55% were people of color
- 14% were veterans
- 58% were older than 55



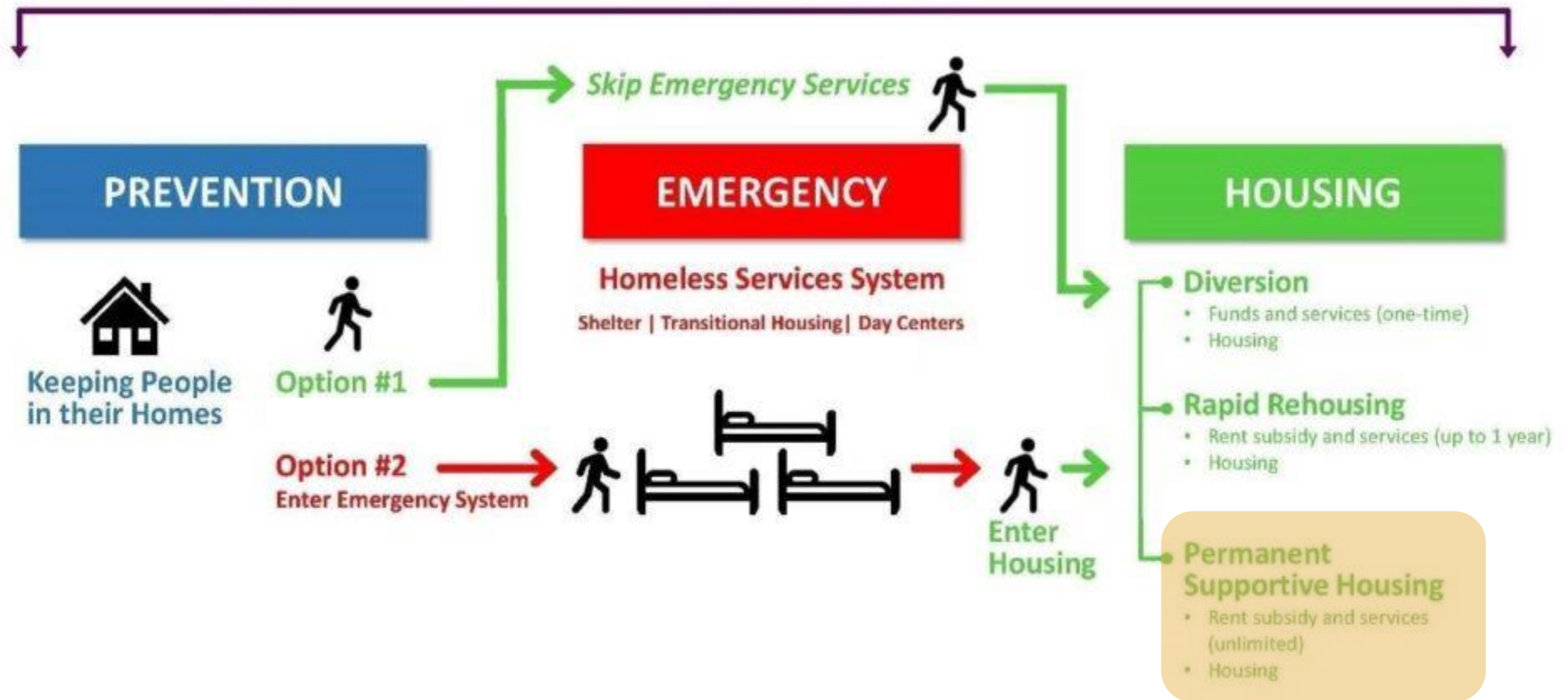
Housing + Support =Permanent Supportive Housing

Our model of permanent housing, coupled with wraparound supportive services, gives our residents the solid base they need to rebuild their lives and leave homelessness behind forever.

- By “**permanent**,” we mean that there is no time limit on our housing.
- By “**supportive**,” we mean that we connect our residents with services that can help them thrive.

Addressing Homelessness Requires a Continuum of Care System

Outreach and Case Management



Property Management

- Buildings fit into and enhance neighborhoods
- Live in staff and 24/7 front desk
- Development focuses on safety, quality & energy efficiency



Long-Term Owner and Neighbor



View of the front desk of Plymouth on First Hill

- Owner and operator for 50+ years for each of our buildings
- Dues paying member to neighboring community groups before and after we have developed the building

Neighborhood Safety

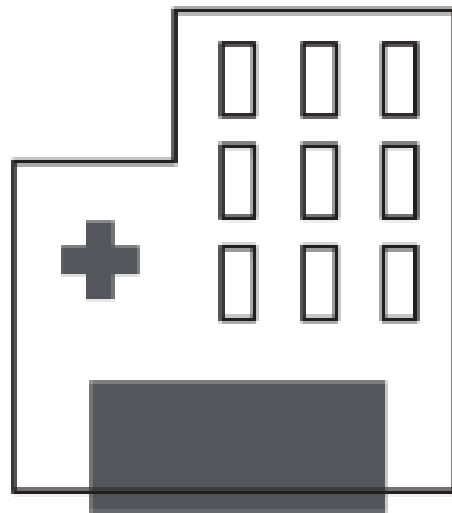
- Live in staff
- Monitored entry for residents and check in for guests
- Interior and exterior security cameras
- Regular coordination with neighbors
- 24-hour front desk
- Weekly check-in with CFH to discuss operations, including any safety issues that may arise
- Regular coordination with Bellevue PD



Compassionate & Cost-Effective

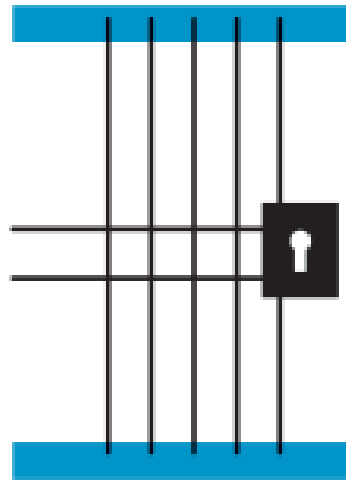
Chronic homelessness results in increased time in the emergency room, jail, and temporary shelters—which are costly alternatives to housing.

FOR THE COST OF...



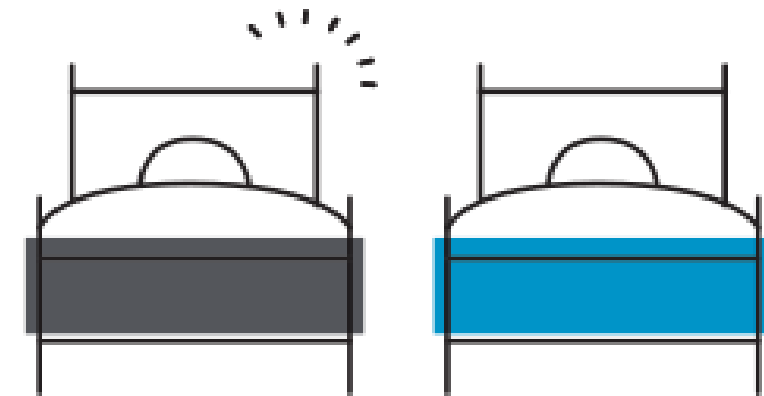
3 DAYS

IN THE HOSPITAL



3 MONTHS

IN A KING COUNTY JAIL



1 YEAR

OF TEMPORARY SHELTER

...PLYMOUTH PROVIDES **365 DAYS** OF HOUSING AND CRITICAL SUPPORT SERVICES.



Bellevue Specific Program Model



"The psychiatrist says those who have a good support system do better at staying out of the hospital than those who don't, and I've been out of the hospital over five years now. I'm proud of that."

- Latricia, Plymouth Resident

- Local preference for Bellevue population
- Partnership & Coordination with CFH
- Improved safety and security
 - Agency-wide safety audit
 - Additional cameras and alarms
 - Design changes, including improved site lines
- Additional Behavioral Health Supports
 - Plymouth developing more robust program
 - Coordinated effort with CFH for 1590 funding

Community Outreach

- Bellevue Police Department
- CFH Eastgate Advisory Group
- Eastgate Community Association
- Letter to neighbors within a ½ mile radius of property
- Nearby Businesses
 - T-Mobile
 - CBRE
 - Seattle Humane Society
- Alliance of Eastside Agencies (Member)



Comcast Employees and their families volunteer at Plymouth Place Apartments for "Comcast Cares Day"



Plymouth & CFH Shared Campus Goals

- Adult men and women experiencing homelessness on the Eastside have increased housing and services options within the Eastside
- People who access our services and housing are met with support rather than hostility by broader community
- We live into our commitments of ongoing community engagement and responsiveness
- We honor our commitments between agencies to ensure safety and *success* of the campus
- Through demonstrated *success*, we pave the way for future Eastside low-barrier housing & services for people exiting homelessness

Plymouth at Eastgate Referral Goal

Local Priority



Potential Referral Pathways
to Fill 95 Units



What to Take Away

- Permanent Supportive Housing is a **cost-effective, evidence-based** model for keeping people housed
- We keep high-needs individuals **off the street**
- We are committed to providing **behavioral health** services on site
- We invest in the **safety** of our residents, staff, and neighbors
- Our building will allow CFH and The Sophia Way to **serve more people** experiencing homelessness in Bellevue



Rendering: View of Plymouth's building from Eastgate Way



2nd & Mercer

91 resident studios + 2 staff apartments
Partnership with Path With Art, which will provide ground floor community arts access. Apartments for residents through the "Housing Options Program."
 CONSTRUCTION START: JAN. 2020
 CONSTRUCTION FINISH: AUG. 2021



The Madison/Boylston Project

112 studios for seniors + 3 staff apartments
Partnership with Bellwether Housing, which will operate an additional 253 low-income apartments.
 CONSTRUCTION START: OCT. 2020
 CONSTRUCTION FINISH: AUG. 2022



12th & Spruce

100 resident studios + 3 staff apartments
Focus on veteran homelessness. Partnership with St. Francis House, which will provide services for those experiencing homelessness from a ground floor space.
 CONSTRUCTION START: NOV. 2020
 CONSTRUCTION FINISH: MAY 2022



Eastgate Supportive Housing

92 resident studios + 3 staff apartments
In partnership with Congregations for the Homeless.
 CONSTRUCTION START: JUNE 2021
 CONSTRUCTION FINISH: JAN. 2023



Ballard Supportive Housing

79 resident studios + 2 staff apartments
In partnership with Inland Group.
 CONSTRUCTION START: MAR. 2021
 CONSTRUCTION FINISH: MAY 2022

Coming soon: Permanent Supportive Housing

5 more projects with 500 apartments,
 one of which is opening in August 2021!



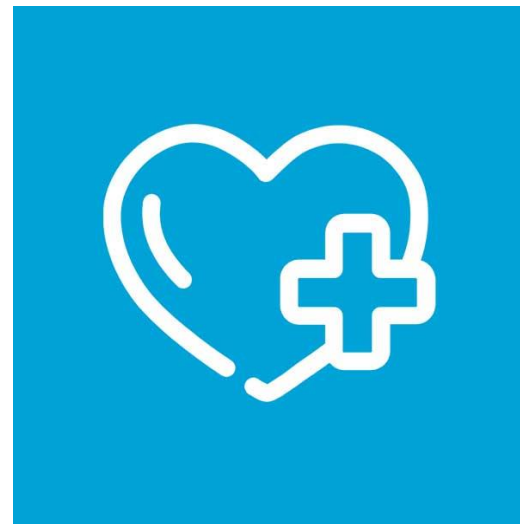
How can you support Permanent Supportive Housing?

Advocate for **flexibility** for providers to reflect the complex nature of housing projects



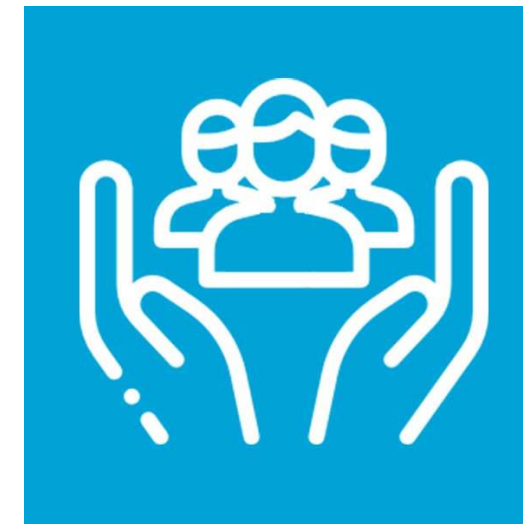
Encourage increased public **investments in building the workforce** for the homeless services sector

Encourage robust and reliable **funding for behavioral health services** and supportive services



Advocate with **Bellevue City Council** to support Plymouth Housing and Congregations For the Homeless Eastgate campus

Advocate for improvements to the King County Coord. Entry for All (**CEA**) system to **prioritize those *most* in need**



Support increased **coordination and alignment** between Seattle, King County, and the King County Regional Homelessness Authority

We will continue to listen, to stay connected, and to expand engagement.

Thank you for your time!

Contact: dsills@plymouthhousing.org