



The
Sophia
Way

Shelter. Safety. Stability.

GRATITUDE
REPORT
2020



R E S I L I E N T

In a year that was filled with challenges as the world has never seen, The Sophia Way witnessed great kindness and generosity from the community.

We saw the power of people coming together – a caring legion of supporters that opened their hearts and gave again and again. We witnessed the strength of women and their resilience in living through the pandemic. And, we saw the compassion and dedication of our extraordinary staff to keep women safe and healthy.

2020 also showed us the potential for transformational change. With the opening of Helen's Place we are re-imagining the possibilities. Being able to connect with women and care for them not just for a few hours, but 24/7 enables us to provide more in-depth services.

While there are still many unknowns about the future, we know that because of the support of local governments, foundations, corporations, faith communities, and individuals, The Sophia Way will be here for women living without homes.

Our sincere thanks to the entire community who walk with us to support women in finding a place to call home.



Maya Subramanian
Board Chair



Alisa Chatinsky
Chief Executive Officer

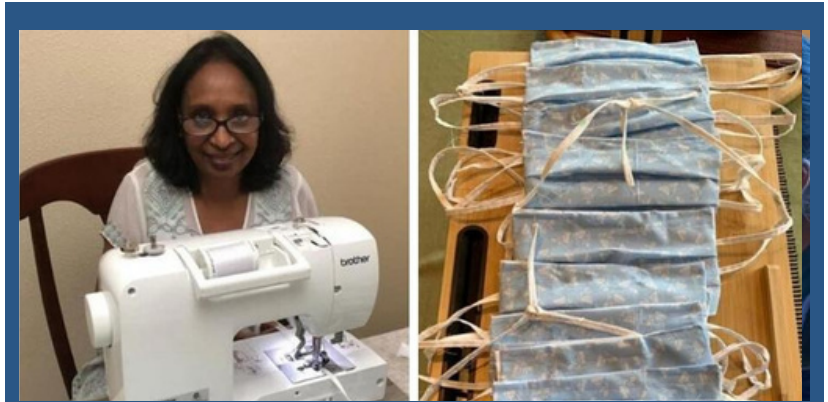


GRATITUDE

It takes a village!

Through the year, as we moved from shelters to a hotel setting and then back to our shelters, a generous community ensured women had everything they needed to stay safe through the pandemic.

Staff went beyond the call of duty, working tirelessly to support women to keep them nourished and healthy.



HELEN'S PLACE

A place to land when times are hard.

A place to rest and rebuild lives.



A dream became a reality on August 19 when The Sophia Way opened its first 24/7 shelter. Because of the pandemic, capacity was less than anticipated, but every day, we have been able to give 40 women shelter, safety, and stability.

Our sincere thanks to:

- Housing Trust Fund - Washington Department of Commerce
- King County - Department of Community and Human Services, Housing and Community Development
- ARCH - A Regional Coalition for Housing
- City of Kirkland
- Eastside Cities
- Salt House Church

And to corporations, foundations, faith communities, civic groups and hundreds of individuals for their support.

538

**Women found shelter,
safety, and stability**

14,398

**Bednights, ensured women
were safe and warm**

47,737

**Donated meals
nourished women**

IMPACT

66

**Women moved into
their own homes**



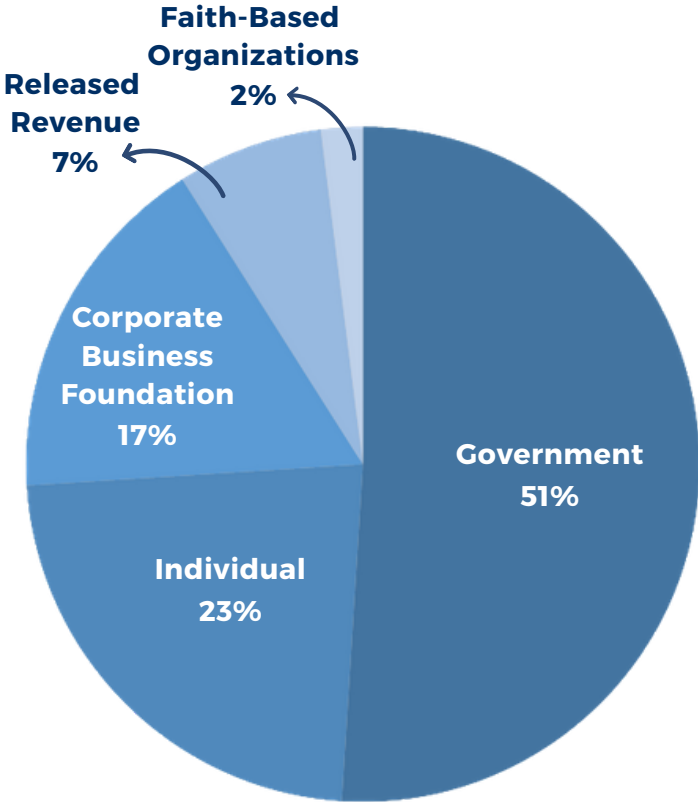
*"It's the first day of the
rest of my life. And when
you're 75 that's saying a
lot. But I have hope and
my future."*

Janis

FINANCIALS 2020

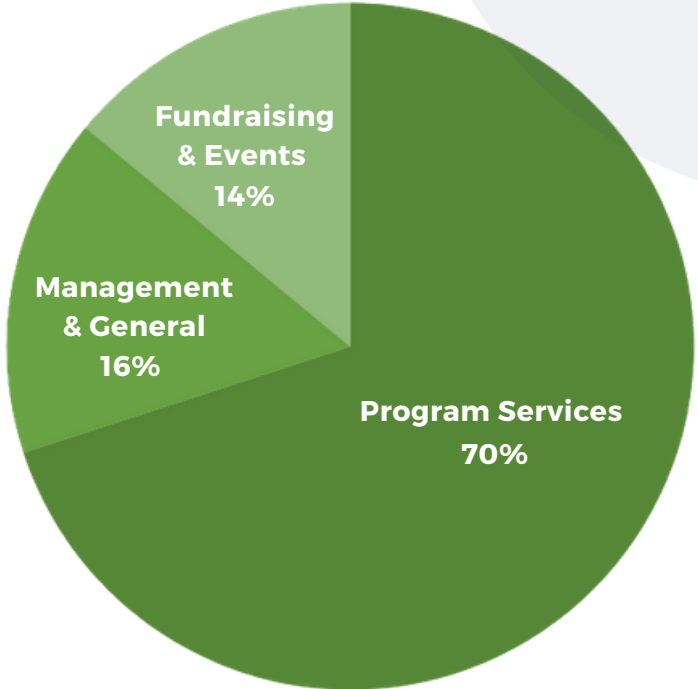
Revenue

\$3,123,456



Expenses

\$3,012,345



Unaudited figures



Roslyn celebrated two huge milestones. Two years in stable housing and one year drug free!

Roslyn

A wife, mother, and veteran, Amara went through traumatic times when she lost her home but has come out stronger. She is now thriving in her own home.

Amara



With the help of our outreach specialist, Michelle and her four daughters moved from a tent to a warm and safe apartment.

Michele

 **The Sophia Way**
Shelter. Safety. Stability.

 **Sophia's Place** •  **Helen's Place** •  **Day Center**

sophiaway.org | info@sophiaway.org | 425.463.6285

 @TheSophiaWay  @the_sophia_way  @thesophiaway  @the-sophia-way